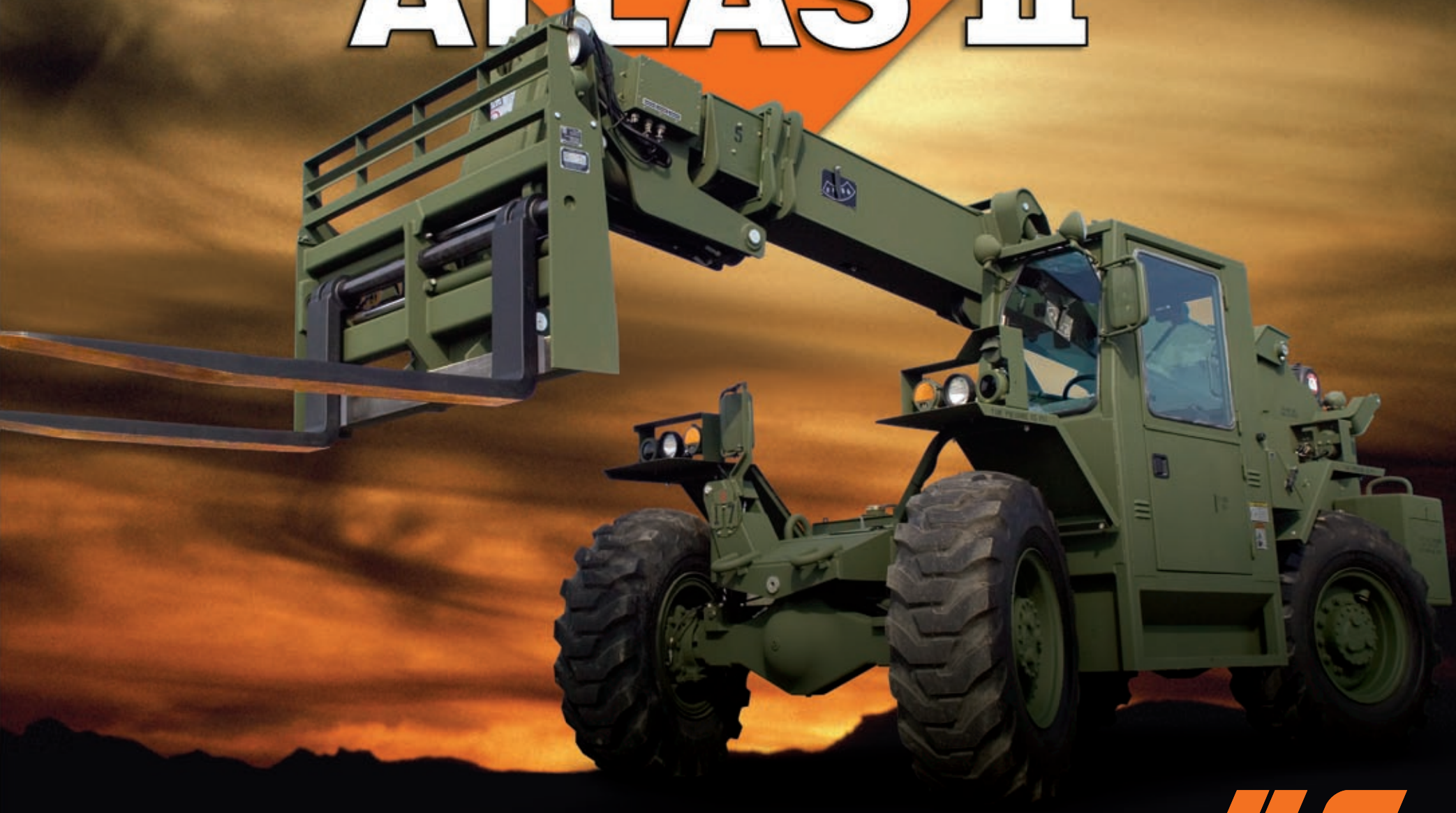


BUILDING ON A STRONG TRADITION

ATLAS II



JLG[®]

A L L T E R R A I N L I F T E R A R M Y S Y S T E M

The JLG® Concept

Superior reach

Unlike traditional lift trucks, JLG military telescopic handlers can reach into trucks or shipping containers, lift loads over trenches or other obstacles, pick up loads from above or below grade and be fitted with buckets and other specialty attachments.

Material handling versatility

Gain a unique advantage with JLG military telescopic handlers. Transport palletted materials easily. Lift and place materials weighing 10,000 lb (4,536 kg) to heights of nearly 17 ft (5.2 m). JLG units are so versatile that the U.S. Army has chosen JLG telescopic handler configurations for all rough terrain material handling logistics support equipment.

Rough terrain capability

With four-wheel drive, high ground clearance, frame leveling and ample horsepower, JLG military telescopic handlers transport materials through a wide variety of rugged terrain, including deep mud, water, sand, snow and unimproved roads.

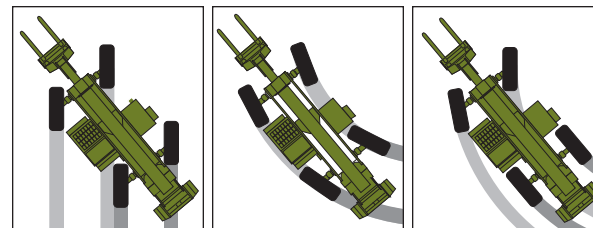
ATLAS II: The Latest Operation in JLG Military Telescopic Handlers

ATLA

- Reduced exhaust emissions—compliant with EPA and CE requirements
- Maintenance reduced from 57 to 14 hrs annually through automatic lubrication system
- Increased maintenance safety with new 3-piece wheel rim
- Quick Attachments interchangeable with ATLAS, 6000M and MMV
- Powerful service, parts, support and distribution throughout the world.
- All terrain and load conditions navigable because of robust 20-ply tires; improved handling stability from increased sidewall strength
- Enhanced versatility with multi-functional attachments—bucket, 8-ft wide fork carriage for container handling, aircraft pallet roller trays
- Access to engine fault codes and operating parameters provided by on-board diagnostics
- Improved load handling capabilities—6,000 lb (2,722 kg) and 10,000 lb (4,536 kg) carriages



With its extended reach and deep access, the ATLAS II can load or unload palletized material from containers located either on the ground or on trucks.



Three steering modes—crab, 4-wheel and 2-wheel steering provide exceptional maneuverability in tight spaces.

AS II

**Quick Attachments
help you get the
job done**



Forks

Choose from a variety of pallet and cubing forks, of varying thicknesses, widths and lengths, to load and unload materials with ease.



Buckets

Our range of buckets allows you to clean up the job site, clear paths or spread gravel.



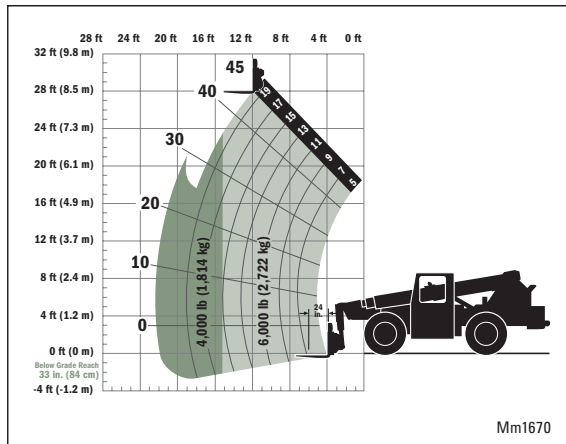
Roller Trays

Transporting heavy boxes has become easier with our roller trays.



ATLAS II

Rated at 24 in. (610 mm) load center using:
6,000 lb (2,722 kg) carriage



Mm1670

Engine

Make John Deere
 Type 4-cylinder turbocharged
 Model PE4045 HF 485
 Horsepower 173 hp, Tier III certified
 Fuel #2 Diesel, Jet A, Jet A-1, JP-5, JP-8 and NATO F-34

Transmission

Make Funk
 Type Powershift
 Model 1744M110B
 Speeds 4 forward/3 reverse

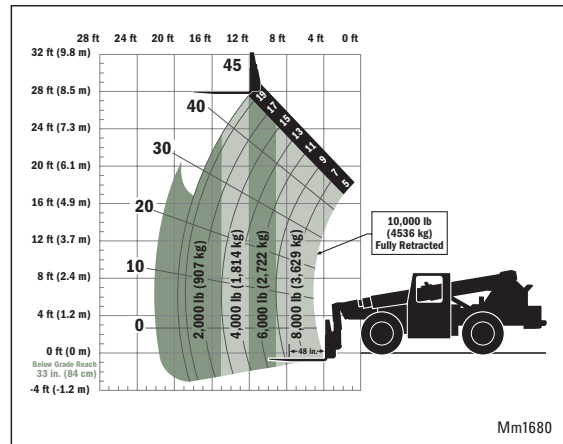
Axle and tires

Make Axletech
 Type NoSPIN differential (front) with lube-for-life joints
 Model PSOC-205-HOB
 Tires Goodyear 17.5 x 25, 20-ply

Steering

Modes 2-wheel, 4-wheel, crab steering

Rated at 48 in. (1,219 mm) load center using:
10,000 lb (4,536 kg) carriage



Mm1680

Boom

Type Telescopic
 Stages 3

Forks

6,000 lb (2,722 kg) 40 in. L x 2 in. H x 4 in. W
 (102 cm L x 5 cm H x 10 cm W)
 10,000 lb (4,536 kg) 72 in. L x 2.5 in. H x 7 in. W
 (183 cm L x 6 cm H x 18 cm W)

Dimensions

Length (max) 29 ft 6 in. (9.0 m)
 Width (max) 8 ft (2.4 m)
 Height (max) 8 ft 6 in. (2.6 m)
 Max. distance from load center to tires 26 ft (7.9 m)
 Max. reach below grade 33 in. (84 cm)
 Wheelbase 124 in. (3.2 m)
 Ground clearance (under axles) 14.3 in. (36 cm)
 Track width (tread) 6 ft 8.5 in. (2.0 m)

Operating Specifications

Turning radius 15 ft 4 in. (4.6 m)
 Frame tilt 9° each way
 Hydraulic reservoir capacity 56.6 gal (214.2 L)
 Fuel tank capacity 60 gal (227 L)
 Boom tilt angle (max) 45°
 Fording depth 36 in. (91 cm)

Additional Data

- Air transportable in C-130, C-141, C-5A and C-17 aircraft
- Heavy-duty frame with tie downs, tow lugs and pintle hook
- Hydraulically controlled frame leveling
- Easily removable three-piece counterweights
- FOPS/ROPS side mounted, enclosed cab with split removable door
- Adjustable suspension operator's seat with seat belt
- Cab heater, defrost fans and air conditioning
- Safety glass for windshield and roof windows
- Cold start kit
- Automatic fork leveling system
- Hydraulically actuated fork spread system
- Full instrumentation with warning lights
- Horn and back up alarm
- Full lighting package with blackout capability
- Safety counterbalance valves on frame tilt, boom hoist, boom extend, attachment hoist and fork tilt cylinders

We reserve the right to amend these specifications at any time without notice. The only warranty applicable is our standard written warranty applicable to the particular product and sale. We make no other warranty, expressed or implied.

The JLG® ATLAS II has been classified as the standard 10,000 lb rough terrain material handling forklift by the UNITED STATES ARMY and meets the requirements of Contract DAAE07-95-D-R012 and Purchase Description 3930-0108.

JLG Industries, Inc.

An Oshkosh Truck Corporation Company
 1 JLG Drive, McConnellsburg, PA 17233-9533
 Toll-free: 866-554-7782
 militarysupport@jlg.com
 www.jlg.com

Form No.: BR-ATLAS-0207-1M
 Part No.: 3137002
 Printed in USA

