

Millennia Military Vehicle

MMV



- **Engineered for demanding military applications**
- **Developed from combat-proven design**
- **Versatile material handling capabilities**
- **Highly maneuverable**
- **Easily maintained and serviced**
- **Adaptable to a wide variety of applications**



M I L L E N N I A M I L I T A R Y V E H I C L E

Millennia Military Vehicle

MMV

JLG® Military Telehandlers

Superior reach and versatility

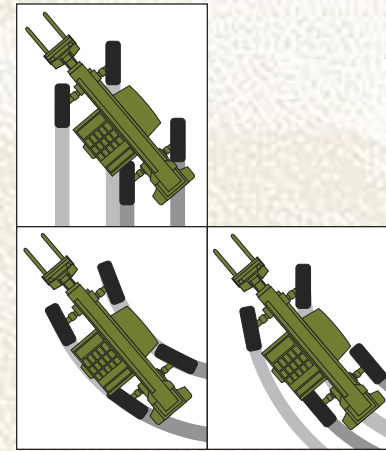
Unlike traditional lift trucks, the MMV military telehandlers can reach deep into trucks or shipping containers, lift loads over trenches or other obstacles, and pick up loads from above or below grade. The MMV can also be fitted with buckets and other specialty attachments for additional versatility in the field.

Rough terrain operation

With four-wheel drive, high ground clearance, frame leveling and a powerful turbo-charged engine, the MMV can transport materials through a wide variety of rugged terrain, including deep mud, water, sand, snow and unimproved roads.

Proven performance

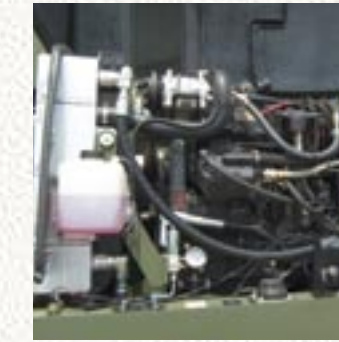
The MMV has been used for support in relief efforts for the Tsunami and Katrina, and in combat operations around the world including Iraqi Freedom, campaigns in Kosovo, Afghanistan, Korea, Thailand and Haiti. Since entering production in 2001, more than 800 MMV's have been deployed to the U.S. Marine Corps and Navy.



Three steering modes—crab, 4-wheel and 2-wheel steering provide exceptional maneuverability in tight spaces.



The enclosed operator cab is spacious, with conveniently placed controls and instruments, providing protection from falling objects and roll over; includes heat, defroster and air conditioner.



Large swing-up panel allows easy engine access.



Hydraulically controlled frame leveling provides improved travel over uneven terrain.

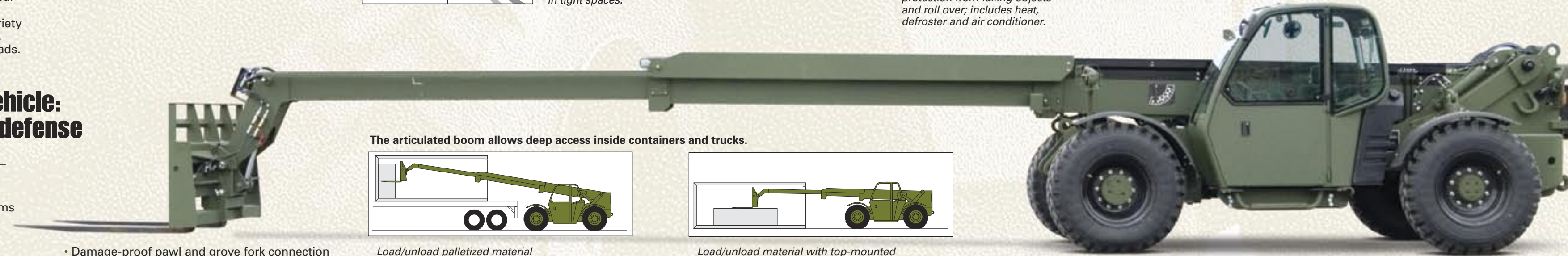


The telescopic/articulated boom provides greater material handling capabilities than any other forklift design.

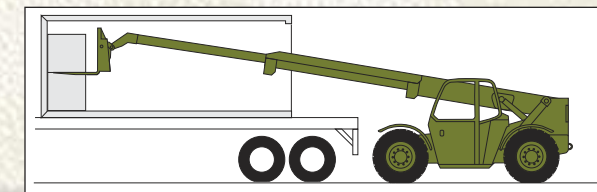
Millennia Military Vehicle: Building a stronger defense

- Improved load handling capabilities—7,000 lb (3,175 kg) and 11,000 lb (4,990 kg) carriages
- Load Moment Indicator system informs operator of capacity limit
- Operates in climates ranging from -25 degrees F to 120 degrees F
- Quick Attach system allows carriage change in less than 10 minutes
- Three steering modes: crab, 4-wheel and 2-wheel
- Powerful 110-hp Cummins turbo-charged diesel engine

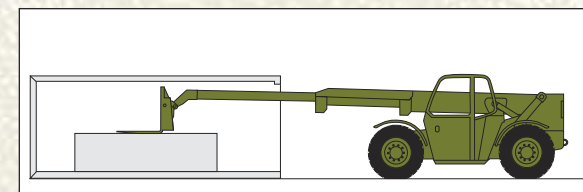
- Damage-proof pawl and grove fork connection
- Rugged radial tires for high durability in challenging environments
- Capable of highway, rail, marine and air transportability
- Meets NATO and GIC dimensional requirements for "ordinary" rail car transport



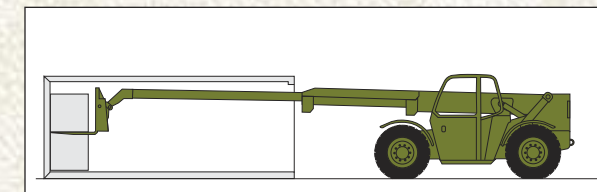
The articulated boom allows deep access inside containers and trucks.



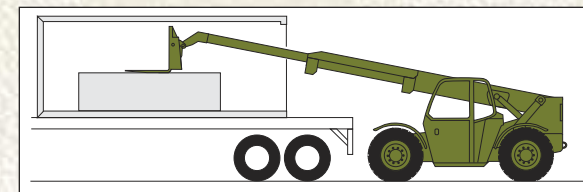
Load/unload palletized material from container on truck.



Load/unload material with top-mounted fork pockets from container on ground.



Load/unload palletized material from container on ground.

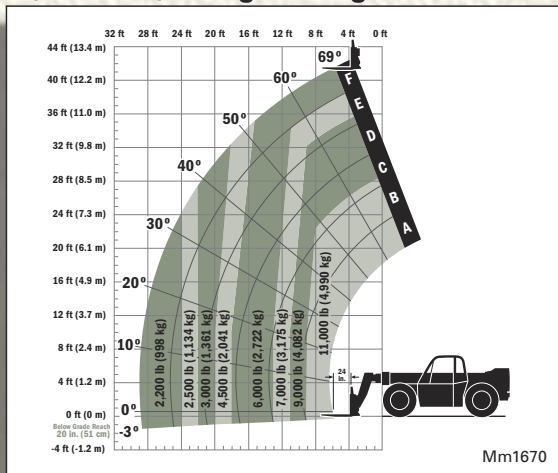


Load/unload material with top-mounted fork pockets from container on truck.

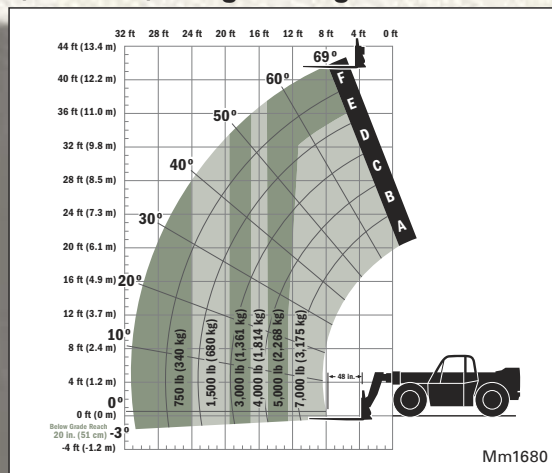
Millennia Military Vehicle

MMV

Rated at 24 in. (610 mm) load center using:
11,000 lb (4,990 kg) carriage



Rated at 48 in. (1,219 mm) load center using:
7,000 lb (3,175 kg) carriage



Engine

Make Cummins
Type 4-cylinder turbocharged diesel 110 hp
Model QSB4.5T after-cooled turbo
Fuel #2 diesel, Jet A-1, JP-4, JP-5, JP-8, F-54

Transmission

Make ZahnradFabrik (ZF)
Model 4WG98 TS
Speeds 4 forward/3 reverse

Axles and Tires

Make ZahnradFabrik (ZF)
Type Limited Slip differential (front)
Tires Bridgestone VUT 2 Star, 15.5R25

Steering

Modes 2-wheel, 4-wheel, crab steering

Boom

Type Telescopic
Stages 3

Forks

7,000 lb (3,175 kg) 72 in. L x 2.5 in. H x 7 in. W
(183 cm L x 6 cm H x 18 cm W)
11,000 lb (4,990 kg) 48 in. L x 2 in. H x 4 in. W
(122 cm L x 5 cm H x 10 cm W)

Dimensions

Length (max) 20 ft 8 in. (6.3 m)
Width (max) 8 ft 4 in. (2.54 m)
Height (max) 7 ft 10 in. (2.39 m)
Max Distance from center load to tires 30 ft (9.14 m)
Max reach below grade 20 in. (51 cm)
Wheelbase 131 in. (333 cm)
Ground clearance 15.1 in. (38 cm)
Track width (tread) 7 ft (2.13 m)
Max lift height 42 ft 4 in. (12.9 m)

Operating Specifications

Turning radius 16 ft 4 in. (4.98 m)
Frame tilt 10 degrees each way
Hydraulic reservoir capacity 41.3 gal (156 L)
Fuel tank capacity 45 gal (170 L)
Boom tilt angle (max) 84°
Fording depth 25 in. (64 cm)

Additional Data

- Air Transportable in C-130, C-141, C-5 and C-17
- Hydraulically controlled frame leveling
- FOPS/ROPS side mounted, enclosed cab
- Adjustable suspension operator's seat with seat belt
- Cab heater, defrost fan, air conditioning, and cab fan
- Safety glass for windshield and roof window
- Cold Start kit
- Automatic fork leveling system
- Hydraulically actuated fork spread system at max. load
- Horn and back up alarm
- Full lighting package with blackout capability
- Safety Counterbalance valves on frame tilt, boom hoist, boom extend, attachment hoist and fork tilt cylinders
- Laptop engine diagnostics

We reserve the right to amend these specifications at any time without notice. The only warranty applicable is our standard written warranty applicable to the particular product and sale. We make no other warranty, expressed or implied.

The MMV has been classified as the standard rough terrain material handling forklift by the UNITED STATES MARINE CORPS and meets the requirements of Contract M67854-01-D-3008.

The National Stock Number is 3930-01-508-0886.

JLG Industries, Inc.

1 JLG Drive, McConnellsburg, PA 17233-9533
Toll-free 866-554-7782
militarysupport@jlg.com
www.jlg.com

An Oshkosh Truck Corporation Company

Form No.: SS-MMV-0507-1M
Part No.: 3137001
R050701
Printed in USA

